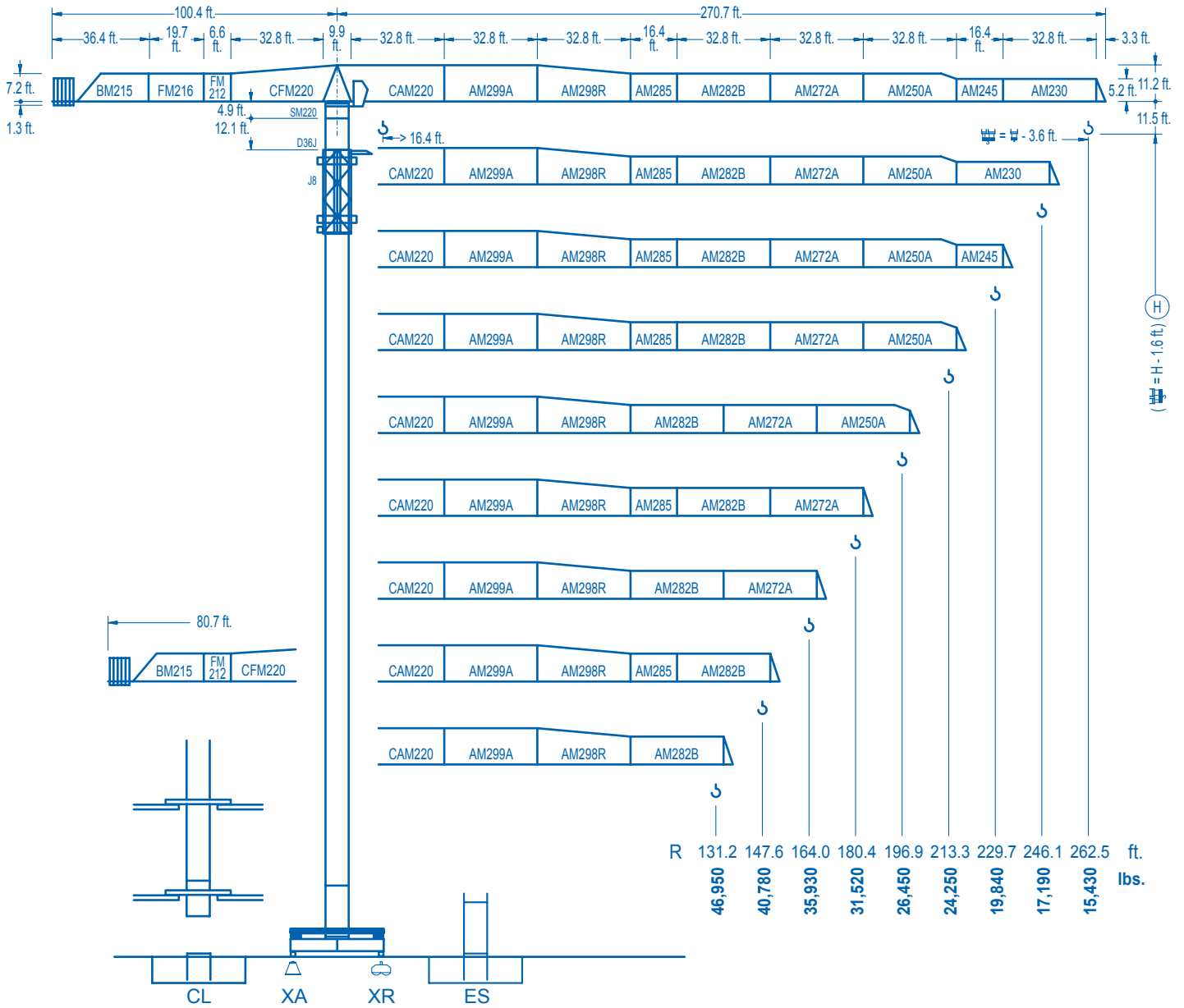


LINDEN 2100

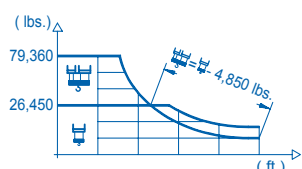
21 LC 750

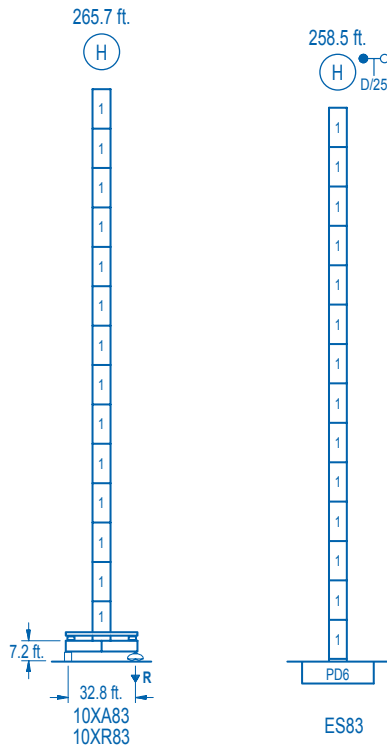
79,360 lbs.



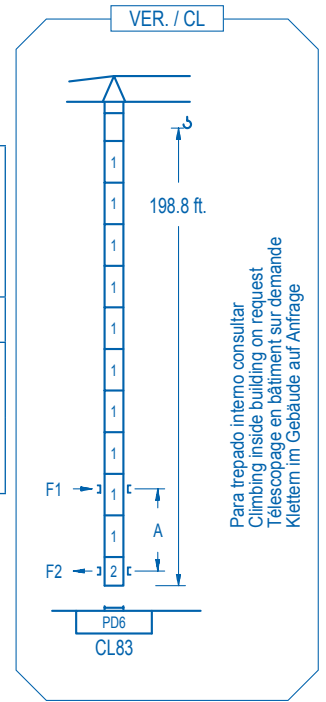
CE EN 14439 (C/25)

R (ft.)	CL	XA	XR	ES	Weight (lbs.)
262.5	60.0	68.9	75.5	82.0	79,360
246.1	61.4	68.9	75.5	82.0	79,360
229.7	64.0	68.9	75.5	82.0	79,360
213.3	69.9	75.5	82.0	83.3	79,360
196.9	76.4	82.0	83.3	83.3	79,360
180.4	83.3	83.3	83.3	83.3	79,360
164.0	83.0	83.0	83.0	83.0	79,360
147.6	83.0	83.0	83.0	83.0	79,360
131.2	82.3	82.3	82.3	82.3	79,360





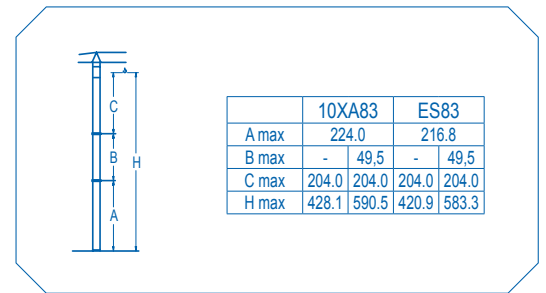
n°	Ref.	h (ft.)
1	D36	8.2
2	CLD36	8.2



Para trepado interno consultar
Climbing inside building on request
Téléscopage en bâtiment sur demande
Klettern im Gebäude auf Anfrage

R. máx.	En servicio In operation En service In Betrieb	10XR83...378,090 lbs.	R. máx.	Fuera de servicio Out of service Hors service Ausser Betrieb	10XR83...344,140 lbs.
----------------	---	-----------------------	----------------	---	-----------------------

Para otras zonas de viento o alturas superiores consultar
For other wind zones or additional hook heights on request
Pour d'autres zones de vent ou des hauteurs supplémentaires sur demande
Für andere Windzonen oder weiteren Hakenhöhen auf Anfrage

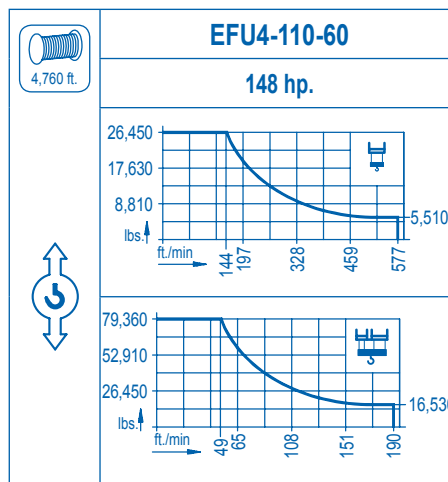


CFU-13
17.4 hp.
0 ⇄ 246 ft./min

GR-14
4 x 103 ft.lbs.
0 ⇄ 0,7 rpm

TRA-10
2 x 74 ft.lbs.
0 ⇄ 78 ft./min

TRA-10VC *
2 x 74 ft.lbs.
0 ⇄ 78 ft./min



Tensión de alimentación Operating voltage Tension de service Betriebsspannung	480 V 3 ph 60 Hz
--	------------------------

Opcional Optional En option Kaufoption	*
---	---